

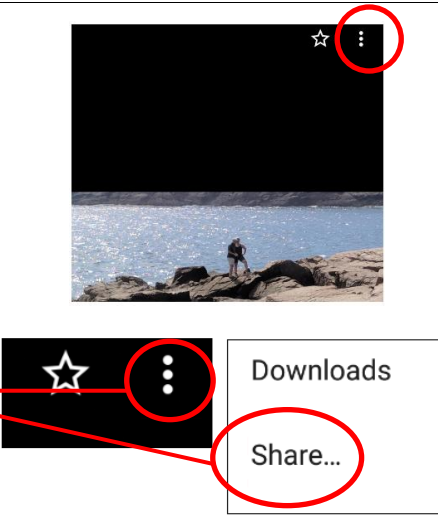
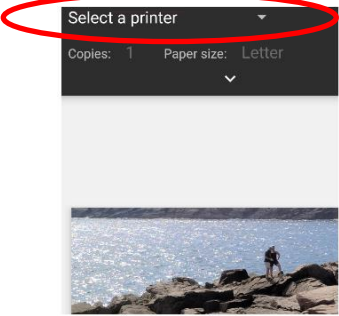
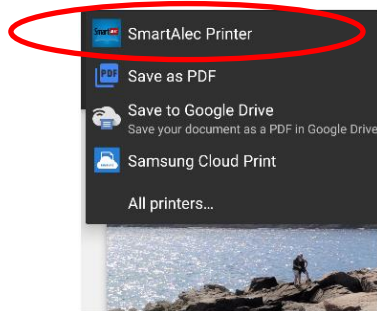


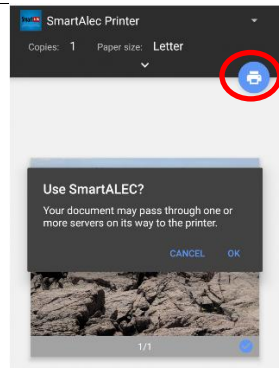
Using Smart Alec Wireless Printing on an Android Device

<p>1. Install the Smart Alec @ Your Library app from the App Store.</p>	
<p>2. Open the app and sign in with the Smart Alec account credentials you created the first time you used Smart Alec. (You can use either your library card number and PIN or your email address and PIN to sign in.)</p>	
<p>3. Click on the Accept button.</p>	
<p>4. Exit the app. The app does not need to be open in order to print. The app does however have to be signed in with your account credentials in order to connect to the Smart Alec printer.</p>	
<p>5. Open the item you want to print. Click on the More Options (3 dots) in the top right corner.</p> <p>Different apps may have different commands to print. The most common ways to print from an app are using the Share icon or the More options (3 dots) icon.</p>	
<p>6. Click on the "Select a printer" dropdown menu. (You may need to scroll to see all options.)</p>	

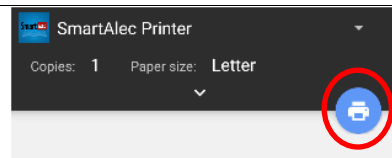
7. Choose the Smart Alec Printer.



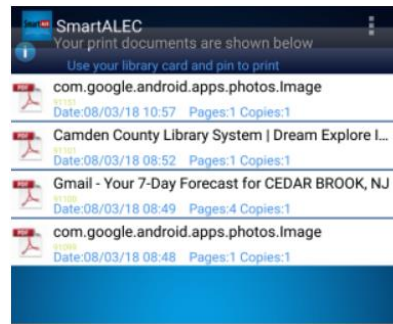
8. You may get a popup message, asking if you want to use Smart Alec. Click on the "OK" button.



9. Click the Printer icon to print.



10. Optional: Open the Smart Alec app to view a list of your active print jobs. (You can print without opening this app.)



11. Go to the Print Release Station at Branigan Library's Public Computer Lab and sign on. You can use either your library card number and PIN or your email address and PIN to sign in.